

1000 Bacon Road

Lat/Long 41° 46' 1.3404" N, 81° 12' 27.0540" W

# Heavy Industrial Development Site - 2 to 53± Acres

Painesville Township, Ohio 44077 (Lake County)

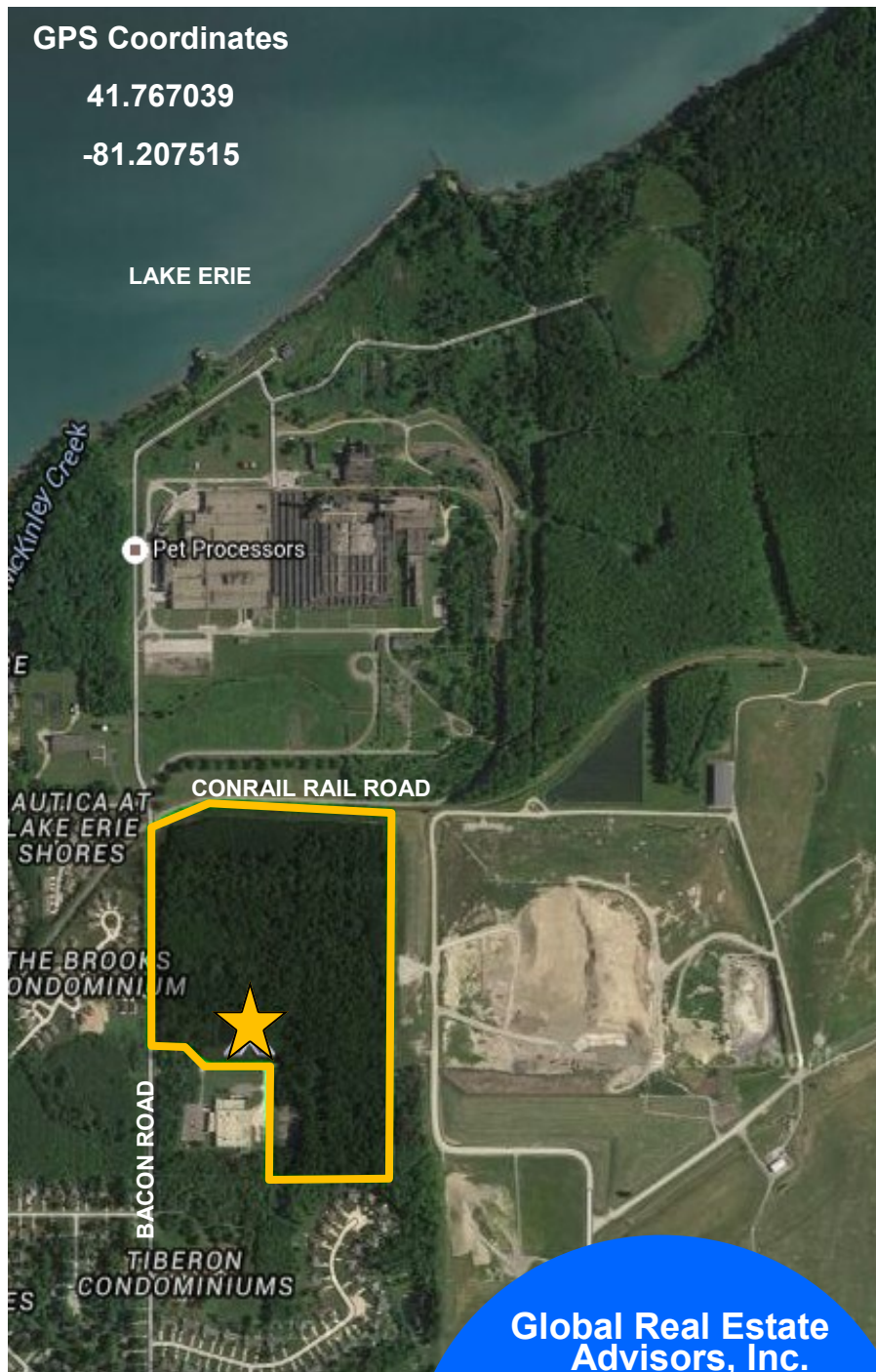
## Property Features:

- 53± Acres
- Will Subdivide into Lots from 2± Acres to 53± Acres
- Zoned Heavy Industrial - I-2
- Situated in Painesville Township
- **NO LOCAL INCOME TAX**
- City of Painesville Power & First Energy
- Sewer & Water
- Water Treatment Plant Situated at the Corner of Lake Road & Bacon Road
- Rail Access
- Economic Incentives Available

## GPS Coordinates

41.767039

-81.207515



[www.GlobalCommercialRE.com](http://www.GlobalCommercialRE.com)

8585 East Ave., Mentor, Ohio 44060

**Real Estate Advisors Inc.**  
BROKER

**Global Real Estate  
Advisors, Inc.**

Neil Sawicki, SIOR, Broker

440-255-5552 x 221

440-339-8585 Cell

[Neil@GlobalCommercialRE.com](mailto:Neil@GlobalCommercialRE.com)

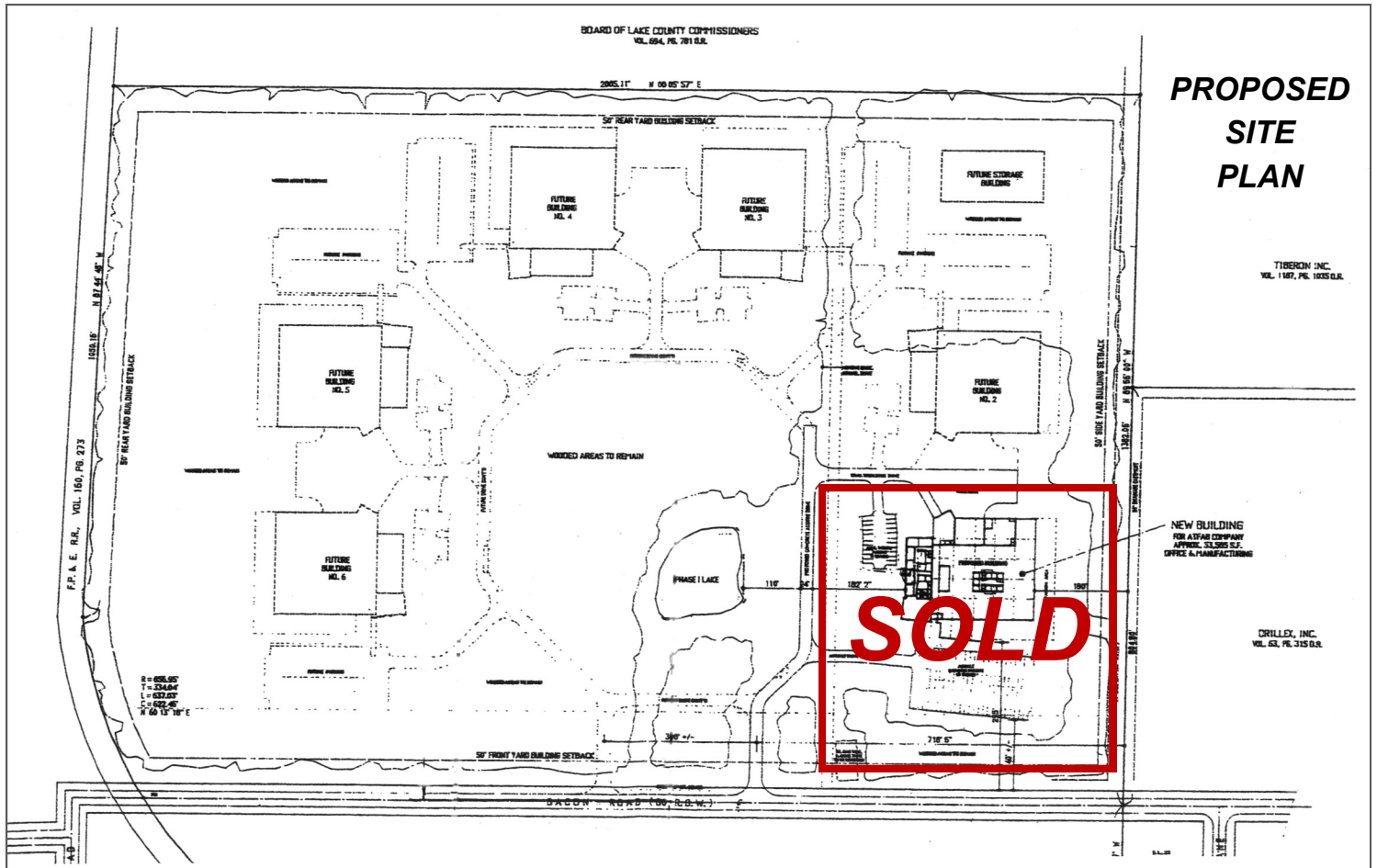
This information has been secured from sources we believe are reliable, but we make no representations or warranties, expressed or implied, as to the accuracy of the information. References to condition, square footage or age are approximate. Buyer or Tenant acknowledges that they are relying on their own investigations and are not relying on Broker provided information. Procuring broker shall only be entitled to a commission, calculated in accordance with the rates approved by our principal only if such procuring broker executes a brokerage agreement acceptable to us and our principal and the conditions as set forth in the brokerage agreement are fully and unconditionally satisfied. Although all information furnished regarding property for sale, rental, or financing is from sources deemed reliable, such information has not been verified and no express representation is made nor is any to be implied as to the accuracy thereof and it is submitted subject to errors, omissions, change of price, rental or other conditions, prior sale, lease or financing, or withdrawal without notice and to any special conditions imposed by our principal.

1000 Bacon Road

Lat/Long 41° 46' 1.3404" N, 81° 12' 27.0540" W

# Heavy Industrial Development Site - 2 to 53± Acres

Painesville Township, Ohio 44077 (Lake County)



- Full Turn Key “Build to Suit” Proposal Available for 15,100± SF Building
- SBA Financing Available
- Zoning Uses Include:
  - ~ All uses of land and building permitted in I-1 Light Industry
  - ~ The Manufacturing of chemicals, glass, paper, textiles, plastics & rubber
  - ~ Boiler Works
  - ~ Foundry
  - ~ Forge
  - ~ Refinery
  - ~ Smelter



[www.GlobalCommercialRE.com](http://www.GlobalCommercialRE.com)

8585 East Ave., Mentor, Ohio 44060

**Real Estate Advisors Inc.**  
BROKER

Global Real Estate  
Advisors, Inc.

Neil Sawicki, SIOR, Broker

440-255-5552 x 221

440-339-8585 Cell

Neil@GlobalCommercialRE.com

This information has been secured from sources we believe are reliable, but we make no representations or warranties, expressed or implied, as to the accuracy of the information. References to condition, square footage or age are approximate. Buyer or Tenant acknowledges that they are relying on their own investigations and are not relying on Broker provided information. Procuring broker shall only be entitled to a commission, calculated in accordance with the rates approved by our principal only if such procuring broker executes a brokerage agreement acceptable to us and our principal and the conditions as set forth in the brokerage agreement are fully and unconditionally satisfied. Although all information furnished regarding property for sale, rental, or financing is from sources deemed reliable, such information has not been verified and no express representation is made nor is any to be implied as to the accuracy thereof and it is submitted subject to errors, omissions, change of price, rental or other conditions, prior sale, lease or financing, or withdrawal without notice and to any special conditions imposed by our principal.